



“Land Conservation Plan For Dakota County” Update

Al Singer
Environmental Resources Department
Physical Development Division

1

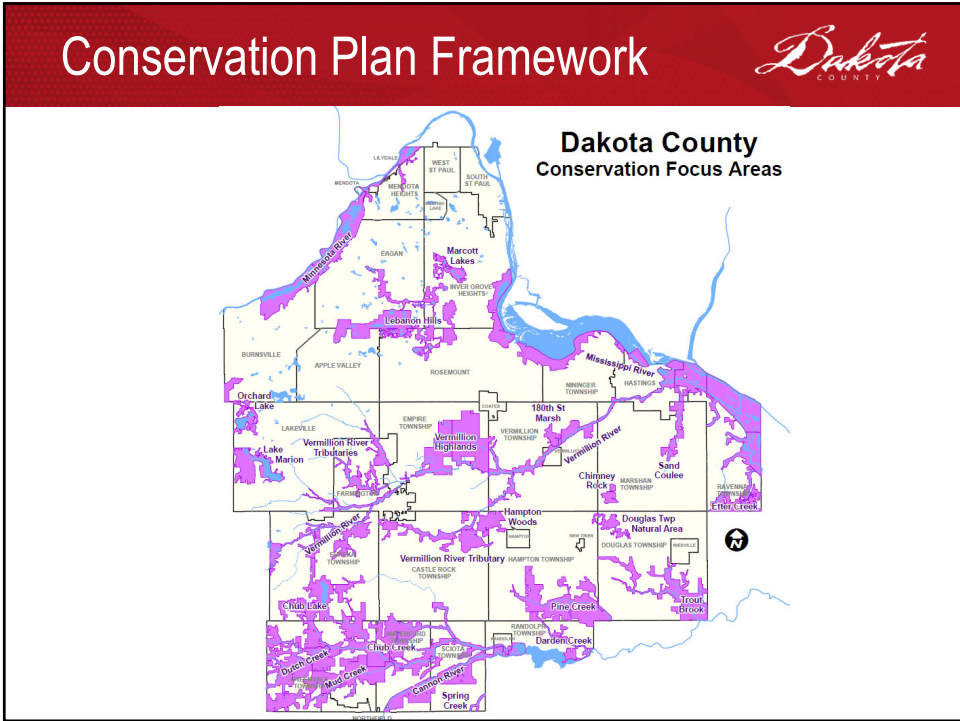
Overview

Presentation

- Land Protection Eligibility and Evaluation Criteria
- City-County Conservation Collaborative
- Land Conservation Communications Plan
- Wetland Basin Identification and Valuation

Comments and Questions

2



3

Eligibility

Land All or Partially Within a CFA

Land Located outside a CFA

- Watercourses (Conservation or Aquatic Corridors)
- Land within or adjacent to parks, greenway corridors, and other public or protected private conservation lands
- Potentially restorable wetlands
- Groundwater Protection Areas (Drinking Water Supply Management Areas and Recharge Areas)
- All/portions of forest/woodlands greater than 40 acres
- Locally significant open spaces
- Native seed sites

4

Evaluation Criteria



Three Conservation Project Types

- Surface Water: Includes a lake, pond, river, tributary and/or perennial or intermittent stream
- Wetland: Includes existing or restorable wetlands and existing or potential upland habitat
- Mixed Upland: Includes a diversity of existing or potential forest/woodland, savanna, and grasslands

5

Evaluation Criteria



Goal 1 Ecological Priority

- Level of Invasive Species
- Level of Hydrologic and Topographic Stability
- Level of Desirable Plant and Animal Species
- Level of Structural and Spatial Diversity
- Level of Ecosystem Function
- Level of Connectivity

6

Evaluation Criteria



Goal 2 Water

- Surface Water
 1. Documented Water Quality
 2. Potential Water Quality Improvements
 3. Proportionality
 - a. Rivers and Streams (Shoreline Length)
 - b. Lakes and Existing Ponds (Open Water Acres)
 - c. New Open Water (Open Water Acres)

7

Evaluation Criteria



Goal 2 Water

- Groundwater
 1. Location Within a Drinking Water Supply Management Area (DWSMA)
 2. Location Within an Important Recharge Area Outside a DWSMA
- Wetland Restoration and Infiltration
 1. Increased Infiltration and/or Water Retention Capacity

8

Evaluation Criteria



Goals 3 and 4 Habitat and Biodiversity

- Past Documented Restoration
 - landowner activities and current actions
- Restoration Potential
 - cost/benefit and likelihood of success
- Future Landowner Commitment
 - initial commitment of cash/in-kind contribution
- Upland Habitat Buffer
 - along waterbody, park, greenway, development buffers, and associated with wetland restoration

9

Evaluation Criteria



Goal 5 Public Support and Involvement

- Subject to Land Conversion Threat
 - ability to complete a conservation-focused alternative
- Provides Important Program Opportunity

Goal 6 Recreational Access

- Provides New Outdoor Recreational Use for Underserved Populations
- Enhances Public Recreational Use
- Visible from Public Land or Right-of-Way

10

Evaluation Criteria		
Goal	Surface Water or Wetlands	Upland
I. Ecological	60 (6 x 10 each)	240 (6 x 40 each)
II. Water		
Surface Water	80	---
Groundwater	25	35
Wetlands	110	---
III. and IV. Natural Resource Quality	355	355
V. and VI. Benefits	140	140

11

City-County Conservation Collaborative					
CITY PARKS	NATURAL AREAS AND CONSERVATION AREAS	ACTIVELY MANAGED NATURAL AREAS	RESTORED NATURAL AREAS	PLANNED NATURAL AREAS TO MANAGE	NON-MANAGED AREAS
8,100 acres	4,215 acres	1,279 acres (28%)	556 acres (12%)	757 acres (18%)	1,623 acres (42%)

12

City-County Conservation Collaborative



Potential Benefits to Cities

- Increase biological diversity, climate resilience and community well-being
- Develop standards, monitoring, quick response, and adaptive management and long-term maintenance for natural resources
- Use of shared, County-developed documents
- Share equipment
- Explore city processes/practices to more fully integrate natural resource protection and improvement with development processes
- Purchase bulk materials and supplies
- Create Land Data Base based on County version

13

City-County Conservation Collaborative



Potential Benefits to Cities

- Increase staff capacity to implement conservation-related projects
- Reduce capital and operational costs
- Improve competitive advantages in seeking non-city funding
- Acquire land that may otherwise not be protected
- Protect previous conservation investments
- Improve the quality of recreational experiences
- Create a more favorable contractor response
- Provide a forum to develop inter-city and City-County priorities and share information

14

City-County Conservation Collaborative



Implementation

- Completed Assessment of City Capacity and Level of Interest
 - Varying staff and resource capacity among cities
 - Some cities interested in land protection services
 - All cities interested in natural resource restoration
- Have Requested Top Three Restoration Site Priorities
 - Underway
 - Staff will provide assistance

15

LC Communication Plan



Goal

Raise awareness of land conservation efforts in Dakota County

- Inform County Residents about the Program
- Market the Program to Landowners for Participation in Conservation Activities
- Provide Program Updates and other Information to Landowners with Conservation Easements
- Celebrate Program Successes

16

LC Communication Plan



Target Audiences

- Residents
- Landowners
- Program Participants
- Local Media
- Board of Commissioners

17

LC Communication Plan



Messages

- Protects Water
- Is Good for Our Health and Well-being
- Protects Plants and Wildlife Habitat
- Preserves Our Heritage
- Makes Our Communities Desirable
- Is an Investment in Our Future
- Share Our Successes

18

LC Communication Plan

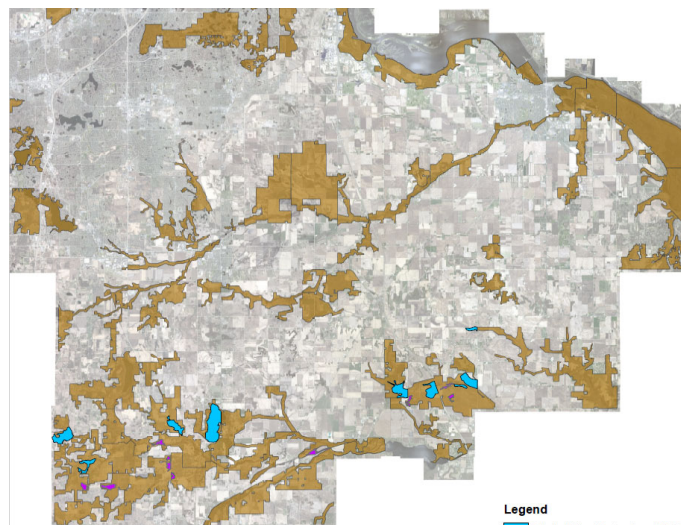


Components

- Residential Newsletter
- Brochure
- Videos
- “Year-End” Report
- Social Media Posts
- Postcards
- E-news

19

Wetland Restoration



Legend
Priority Wetland Restoration within LC Conservation Focus Areas
Additional Priority Wetland Restoration within LC Conservation Focus Areas
Conservation Focus Areas

20

Wetland Restoration



Challenges

- Complicated Individual Designs
 - ❖ Uncertain drain tiling
 - ❖ Basin and upland components
- Likely to involve multiple landowners
- Anticipated review by multiple entities
- Marketing
 - ❖ Resistance to Permanent Easements
 - ❖ Developing Attractive Offers
 - ❖ Accepted Valuation Methodology

21



Comments or Questions?

22